

# PVi Lite

Take control and leverage your ILI data

Part of our successful PipeView™ Integrity software suite, PVi Lite is a stand-alone program that delivers smart filing of ILI data, fitness-for-purpose and corrosion growth assessments.



## Transform your integrity team productivity

### Within hours of receiving your ILI report:

- Have fingertip access to ILI data, anomalies and associated report files
- Carry out fitness-for-purpose assessments
- Compare two ILI runs and quickly estimate corrosion growth for each feature

### PVi Lite works straight 'out of the box'

- Software is self-installing and requires no implementation
- Operates straight from the ILI files, in most cases without the need for data loading or conversion

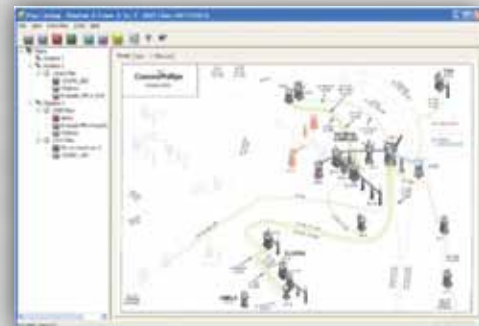


# Small investment huge return

PVi Lite will increase the productivity and effectiveness of your integrity teams – giving them instant access to all ILI-related data, and the power to perform fast and effective integrity evaluations whether they're in the office or on the road. PVi Lite self-installs, self-configures, is easy to use and requires little or no data conversion: it operates directly from your ILI files.

An optional interactive map view enables one-click navigation to any pipeline asset for rapid access to all linked ILI data sets and other associated file types.

A navigation panel allows users to quickly view files and folders, add and reorganize them, and launch appropriate applications from the toolbar or by double-clicking the file itself.



## Available as stand-alone modules or a fully integrated package

### PipeCatalog

Provides 'smart filing' to store and relate all ILI records, reports and other associated documents

PipeCatalog provides quick access to your vast collection of inspection information by storing links to multiple ILI and other pipeline data (e.g., CIPS, DCVG and other surveys; excavation reports, ILI schedules, etc). It can be configured to contain an interactive map image of the pipeline network so users can quickly click and navigate to a particular pipeline. PipeCatalog serves as the launch pad for all linked files and gives shortcut access to the other PVi Lite modules and ILI viewing software. It can even launch data-viewing software from other vendors by simply associating specific file types with the viewing application.

### PipeFFP

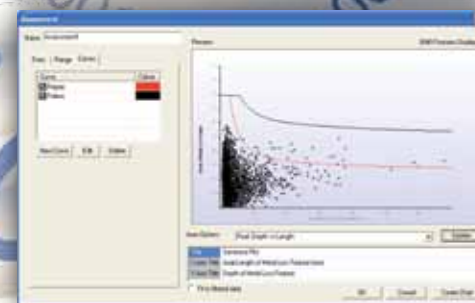
Assesses the significance of ILI-reported features on the immediate integrity of the pipeline and develops remediation schedules to manage long-term integrity

PipeFFP gives users access to industry best-practice assessment methods and tools needed for superior pipeline integrity management – including advanced corrosion growth-rate estimation, time-based remediation planning, mitigation strategies, response schedules and optimal re-inspection intervals. Tools include various 2D and 3D charting options to show the distribution of reported metal loss, manufacturing and dent features – with the ability to select, view, filter and export various listings. PipeFFP develops assessment/sentencing charts, calculates burst pressure and pressure sentenced ratios from a wide range of options including assessment type, design/safety factor, operating pressure and sizing tolerances.

The metal-loss defect assessment methods in PipeFFP include: ASME B31G and Modified B31G; RSTRENG (LAPA), DNV RP F101; Shannon, Shell 92, NG 18; Kastner (circumferential dimensions). Beyond the examples listed here, PipeFFP provides extensive data viewing, analysis, reporting and exporting capabilities.



PipeFFP enables ILI features to be viewed interactively in GoogleEarth when IMU/GPS data is available.

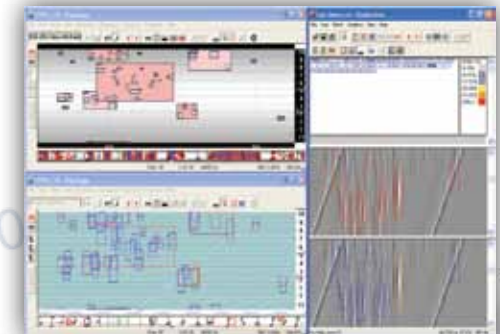


Quickly assesses the significance of reported features, runs what-if scenarios, calculates burst pressure, PSR and time to remediate using industry best practice methods.

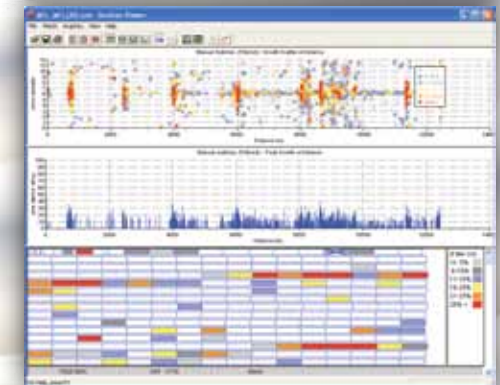
### PipeRuncom

Enables automated comparison of two ILI runs to find and evaluate feature-to-feature corrosion growth along an entire pipeline

PipeRuncom matches and compares individual features and automatically estimates growth rates. PII data can be viewed as side-by-side ILI signals, while other vendor data are displayed in box format. Navigation tools provide quick access to sites of interest for signal viewing and further investigation. Spool view provides a map of observed corrosion along the full pipeline length. Manual matching tools let users update or adjust matched sites and growth results. Reporting capabilities include summary reports, growth-rate listings, results filtering, etc., and easy-to-use charting tools offer up to 15 different graphical displays. Corrosion growth results can be automatically exported to PipeFFP to predict future corrosion growth and create future repair plans.



Aligns and compares two ILI runs (even from different vendors) to determine corrosion growth rates.



Charting tools provide quick access to locations of interest, and corrosion growth listings are easily exported to PipeFFP or Microsoft Excel®.

## PII Pipeline Solutions

a GE Oil & Gas and Al Shaheen joint venture

### Western Europe and Africa

Atley Way, Cramlington  
Northumberland NE23 1WW  
United Kingdom  
T +44 191 247 3200  
F +44 191 247 3101

### Southern Europe

Via Felice Matteucci 2  
50127 Florence Italy  
T +39 055 423 211  
F +39 055 423 8308

### Central Europe and CIS

Lorenzstrasse 10  
D-76297 Stutensee-Blankenloch  
Germany  
T +49 7244 732 0  
F +49 7244 732 123

### Middle East

Al-Emadi, Financial Square  
Building No 1, First Floor  
Doha C-Ring Rd.  
Qatar  
T +974 401 31300  
F +974 442 93460

### Asia Pacific

No. 7, Jalan Pemberita U1/49  
Section U1, Temasya Industrial Park  
Glenmarie  
40150 Shah Alam  
Selangor D. E.  
Malaysia  
T +6 03 5569 5548  
F +6 03 5569 4895

### North America

7105 Business Park Drive  
Houston, Texas  
77041-4040 USA  
T +1 713 849 6300  
F +1 713 937 0740

4908 52<sup>nd</sup> Street SE  
Calgary, Alberta  
T2B 3R2 Canada  
T +1 403 262 7447  
F +1 403 237 9693

Av. Antonio Dovali Jaime 70, 4<sup>th</sup> floor  
Col. Santa Fe, Del. Alvaro Obregon  
CP 01210, Mexico City  
T +52 55 9177 6601  
F +52 55 9177 6606

For complete contact information,  
please refer to our website.

[geoilandgas.com/pii](http://geoilandgas.com/pii)

The information contained herein is general in nature and is not intended for specific construction, installation or application purposes. GE reserves the right to make changes in specifications or add improvements at any time without notice or obligation.

GE, the GE Monogram, and imagination at work are registered trademarks of the General Electric Company.

©2012 General Electric Company  
All Rights Reserved

