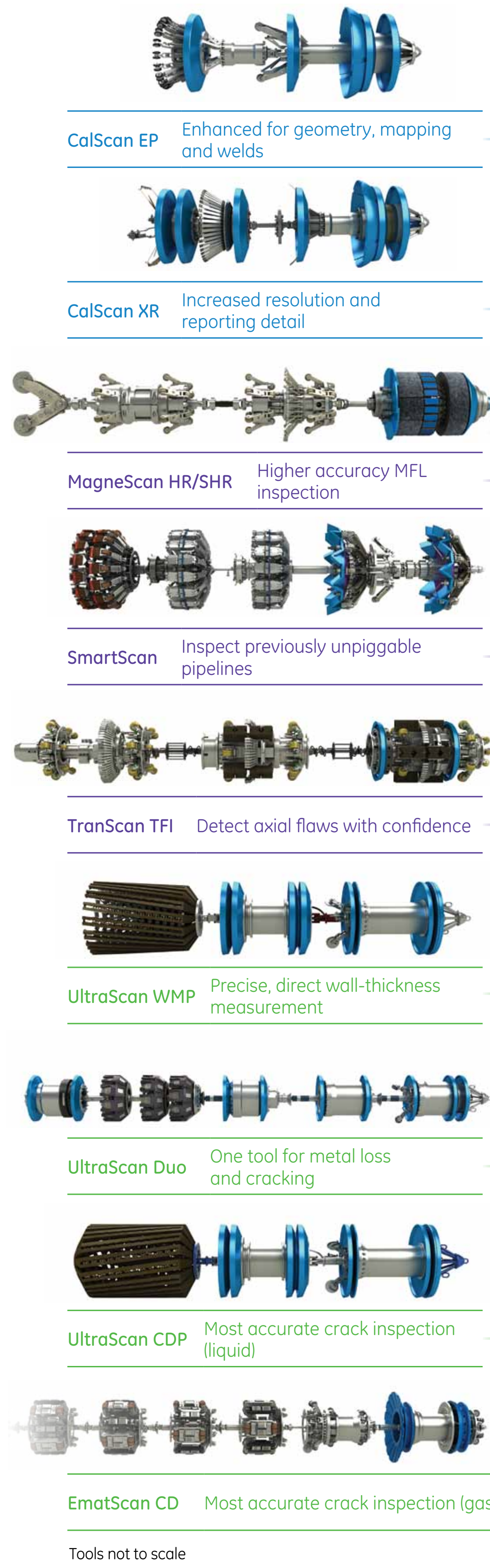
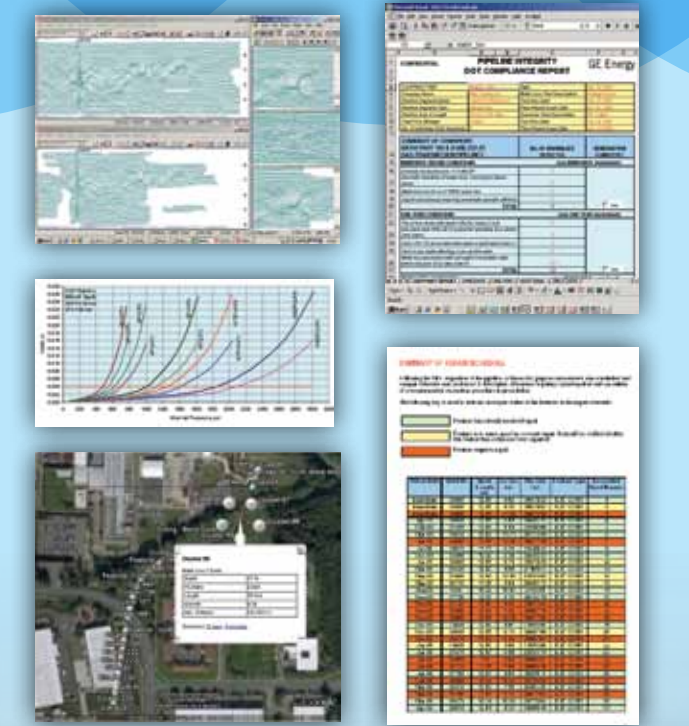
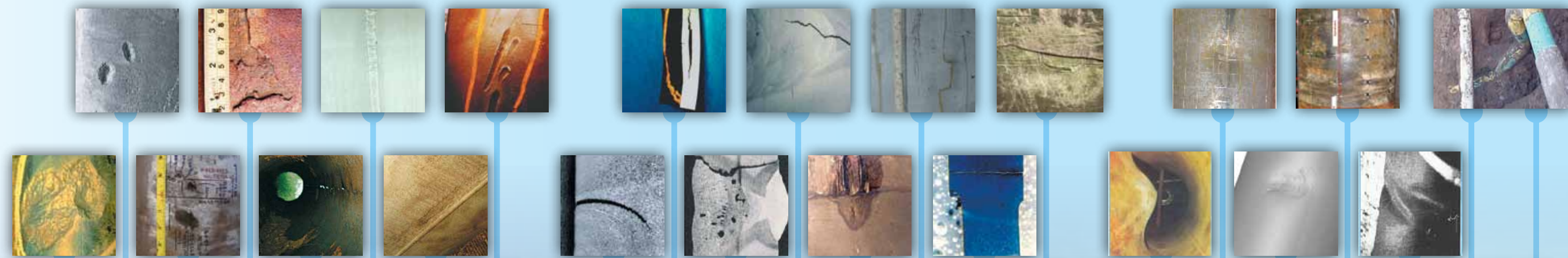


# The right technology for every integrity challenge



- Calipers
- Magnetics
- Ultrasonics
- Best fit
- Strong fit
- Optional



	Application Specifics	Metal Loss Features	Crack Features	Deformation & Geometry	Integrity Assessments
	Gas medium	General corrosion	Hook/seam weld crack	Plain dent	Corrosion growth assessment
	Liquid medium	Pitting	Hydrogen induced crack	Dents with metal loss	Fitness-for-purpose (FFP)
	Multi/Dual-diameter	Pinholes	Fatigue crack	Small dents (1" diameter)	Dent strain assessment
	Thick wall pipe	Axial groove	Shrinkage crack	ID expansions	Crack integrity assessment
	High-flow velocity	Narrow axial external corrosion	Circumferential crack	Buckle/wrinkle	Crack growth assessment
		GW Anomalies	SCC	Bend	Bending strain assessment
		Wall thinning/erosion	Lack of fusion	Bending strain/pipe movement	Centerline mapping
		Laminations	Crack in Dents		
CalScan EP	● ● ● ● ●			● ● ● ● ● ● ●	
CalScan XR	● ● ● ● ●			● ● ● ● ● ● ●	
MagneScan HR	● ● ● ● ●	● ● ● ● ● ●		● ● ● ● ● ● ●	● ● ● ● ● ● ●
MagneScan SHR/SHR+	● ● ● ● ●	● ● ● ● ● ●		● ● ● ● ● ● ●	● ● ● ● ● ● ●
SmartScan	● ● ● ● ●	● ● ● ● ● ●		● ● ● ● ● ● ●	● ● ● ● ● ● ●
TranScan TFI	● ● ● ● ●	● ● ● ● ● ●	● ● ● ● ● ●	● ● ● ● ● ● ●	● ● ● ● ● ● ●
UltraScan WMP	● ● ● ● ●	● ● ● ● ● ●	● ● ● ● ● ●	● ● ● ● ● ● ●	● ● ● ● ● ● ●
UltraScan Duo	● ● ● ● ●	● ● ● ● ● ●	● ● ● ● ● ●	● ● ● ● ● ● ●	● ● ● ● ● ● ●
UltraScan CDP	● ● ● ● ●	● ● ● ● ● ●	● ● ● ● ● ●	● ● ● ● ● ● ●	● ● ● ● ● ● ●
EmatScan CD	● ● ● ● ●	● ● ● ● ● ●	● ● ● ● ● ●	● ● ● ● ● ● ●	● ● ● ● ● ● ●
Tools not to scale	● ● ● ● ●	● ● ● ● ● ●	● ● ● ● ● ●	● ● ● ● ● ● ●	● ● ● ● ● ● ●

