

Dresser* Micro Power Supply Unit

Model 299 24V DC intrinsically safe power supply

The Dresser Micro Power Supply Unit is designed for use with the Dresser Micro Series range of products when an intrinsically safe low power supply is required in a hazardous area. This includes the MC2 and IMC/W2 products. The Micro Power Supply Unit eliminates the need for battery changes in applications where the corrector is being interrogated frequently.



Enclosure

Weatherproof aluminum enclosure rated to IP66 (NEMA 4X) for wall or panel mounting.

Size

6.299" width x 4.72" height x 2.411" depth.

Input

12 to 24V DC.

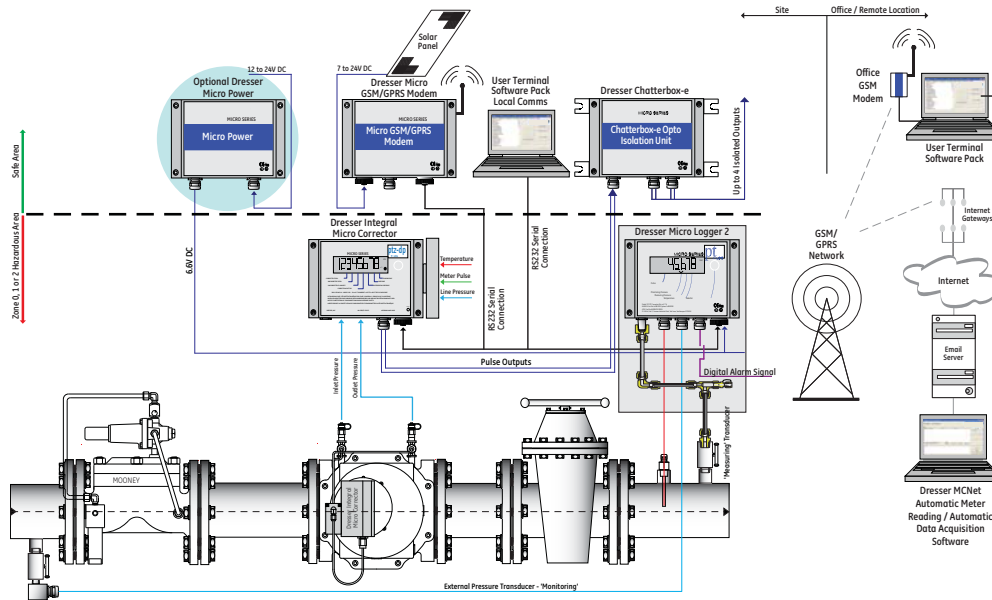
NOTE: If your main power supply is AC then an AC/DC adaptor to the required 12/24V DC is required.

Intrinsically Safe Output

6.6V DC. Suitable to power a single Dresser Micro product indefinitely.

Intrinsic Safety Certificate

BAS99ATEX7122 II (1) [EEx ia] IIC. The Micro Power Supply must be installed in the safe area and is suitable for connection to equipment in hazardous areas Zone 0, 1 or 2 (equivalent to Class 1, Division 1 or 2).



GE Oil & Gas

Houston, Texas
 Inside US Ph: 800.521.1114
 Outside US Ph: +1 832.590.2303

Southampton, UK
 Tel: +44 (0) 23 80875600

Visit us online at: ge.com/energy

© 2012 General Electric Company
 All Rights Reserved

*Denotes trademarks of
 General Electric Company

