

Dresser* Micro GSM/GPRS Modem Model 105

Incorporates the Quad Band GSM/GPRS Modem Module

Opto-isolators provide an intrinsically safe unit specifically designed to work with the Dresser Micro Series products including data loggers and volume correctors.

An internal rechargeable lithium polymer battery is designed to be charged either from a solar panel, DC mains supply (7 to 24V) or from any suitable power source. An internal power regulator guards against internal damage from over powering.

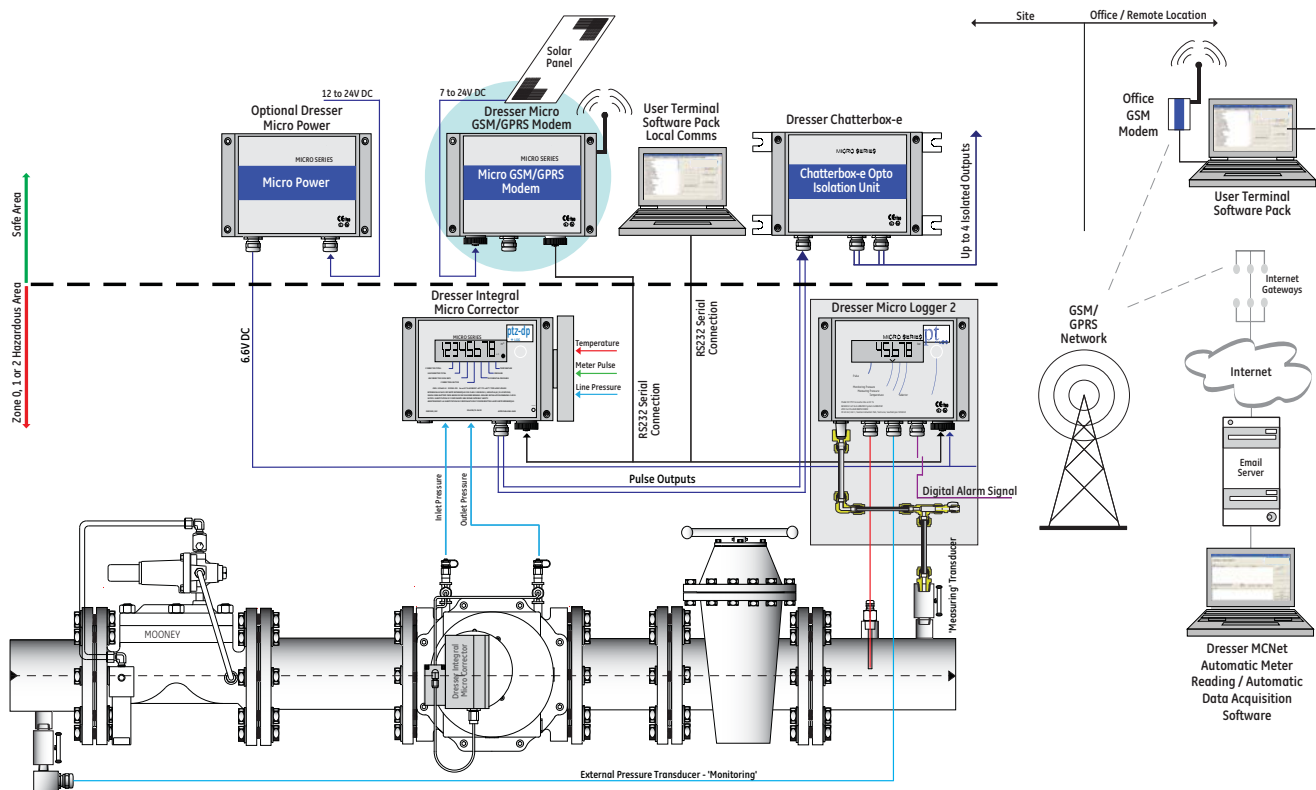
Internal diagnostic LEDs aid the commissioning and fault finding on site. An external LED displays network or communication status.

The Micro Series product can switch the modem ON or OFF as a power saving feature or the modem can be ON continually.

- Up to 2.4 kbps communication speed (CSD)
- GPRS Communication Class 10 with an embedded TCP/IP internet application protocols.
- Internal rechargeable lithium polymer battery
- Intrinsically safe via Opto-Isolation to 11 (1) G [Ex ia] IIC, therefore suitable for connection to equipment in hazardous zones 0, 1 or 2
- 7 Internal LEDs to assist during commissioning or fault finding on site
- 1 External LED displays GSM network, power and communication status



- Weatherproof cast aluminum housing rated to IP66 offers flexibility of installation
- Power saving features, ON/OFF can be controlled from the Micro Corrector 2/Micro Logger 2
- Power protection from external power sources, including solar panels, mains or high capacity rechargeable battery sources
- External antenna for optimum signal location 900/1800 MHz or 800/1900 MHz
- Simple mechanical and electrical installation



Modem Module Specification

Wavecom Quad Band - 900/1800MHz or 850/1900 MHz communication methods available include; Circuit Switched Data (CSD), GPRS (General Packet Radio Service) - Class 10 with an embedded TCP/IP internet application protocols.

Communication Rate

Up to 2.4 kbps (only relevant for CSD data transmission).

Internal Power

Re-chargeable lithium polymer battery.

External Power

7 to 24V DC from any source for example solar panel which recharges the internal power.

Intrinsic Safety

BASEEFA CERT No Ex98E2082 ATEX CERT No BAS99ATEX7049 II(1)G [Ex ia] IIC. The Dresser Micro GSM/GPRS Modem must be installed in the safe area and is suitable for connection to Micro Correctors or Micro Logger 2's installed in hazardous areas locations Zone 0, 1 or 2.

Commissioning / Diagnostic LED's (Internal)

'Pwr' (Correct External Power Source)

'Bat' (Internal Battery is sufficiently charged to operate the modem) 'ON' (GSM is in 'ready' mode awaiting

communication) 'DCD' (GSM Modem is receiving a communication, this is then followed by the 'RX' & 'TX' flashing as data transfer takes place) 'DTR' (GSM Modem is dialling out, this is followed by 'RX' & 'TX' flashing as data transfer takes place) 'RX' & 'TX' (Data is being transferred).

Service LED (External)

Constantly On - Unit is powered up in 'On' mode.
1 Hz Flashing - GSM Modem has established contact with the GSM network .
2 Hz Flashing - GSM Modem is communicating
Constantly Off - Unit is in 'sleep' mode.

Antenna

Standard SMA type connector, 3m long with an adhesive pad.

RS232

Connection to other Micro Series range of products will be via a 5m, 10m or 15m length serial cable.

Enclosure

Weatherproof aluminium enclosure IP66 rated suitable for wall or panel mounting. Size: 160mm wide x 120mm high over glands x 62mm deep.

GE Oil & Gas

Houston, Texas
Inside US Ph: 800.521.1114
Outside US Ph: +1 832.590.2303

Southampton, UK
Tel: +44 (0) 23 80875600

Visit us online at: ge.com/energy
© 2012 General Electric Company
All Rights Reserved

*Denotes trademarks of
General Electric Company

