



# GL\* Annular Blowout Preventer

*Field-proven, long-life blowout prevention*

## Applications and Benefits

The GL annular BOP has a field-tested, field-proven design. It has demonstrated world-class dependability and quality to users for over 30 years. Special and proven features like these are the reason why customers have come to expect reliable performance, closure after closure.

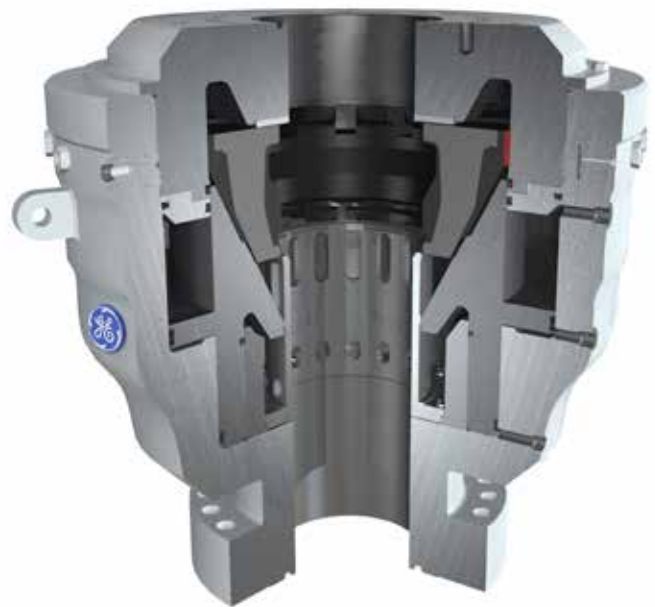
## Key Features

The key to the GL's excellent performance lies in its unique design, which includes:

- A packing unit specially molded with two different styles of inserts to reduce closing volume and increase closing cycles
- A replaceable wear plate that eliminates metal-to-metal contact between the packing unit inserts and the BOP head
- A piston design that provides complete balance, reliable operation and ease of assembly
- A latched head for fast, easy access to the packing unit and wear seals
- An opening chamber head that prevents debris from falling into the chambers when replacing the packing unit
- A bolted-in inner sleeve that is field replaceable
- Corrosion-resistant alloy for the ring grooves
- Packing units with nitrile or natural compounds
- Off-the-shelf deliveries of packing units for reduced lead time

## The GE Oil & Gas GL Advantage

The GL's Long Life (LL) Packing Unit has been specifically designed and tested to provide unsurpassed performance and durability. In performance tests, it outlasted other replacement units by a minimum of 5-to-1. The key to this remarkable performance is a revolutionary asymmetrical insert design which provides longer life and reliability. The LL Packing Unit is designed to provide greater fatigue life without compromising stripping performance and operating characteristics.



## Engineering Data

Bore (inches)			13.625	18.75	Dual 18.75	21.25
Working pressure (psi)			5,000	5,000	5,000	5,000
Hydraulic Operating Pressure (psi)			1,500	1,500	1,500	1,500
Gal. to Close (U.S. gal.)			19.8	44	44	58
Gal. to Open (U.S. gal.)			19.8	44	44	58
Secondary Chamber (U.S. gal.)			8.2	20	20	29.5
Stud to flange height (inches)	Flanged Bottom	5 m	-	65.25	112.00	77.50
		10 m	-	-	-	84.25
Stud to flange Weight (lbs)	Flanged Bottom	5 m	-	35,000	63,100	45,000
		10 m	-	-	-	-
Clearance Diameter (inches)			-	76.00	76.00	78.25



GE Oil & Gas  
 3300 North Sam Houston Parkway East  
 Houston, TX 77032

24/7 customer support: +1 281 449 2000  
[geoilandgas.com/drilling](http://geoilandgas.com/drilling)

\* Trademark of General Electric Company  
 © 2014 General Electric Company. All rights reserved.  
 GEA31278 (06/2014)