

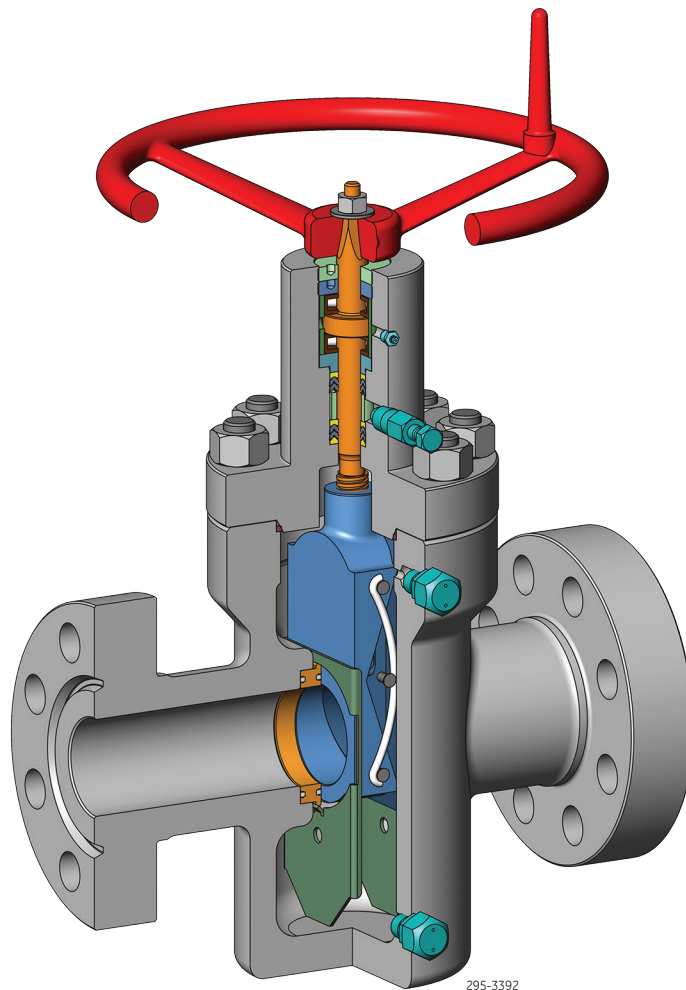
Gate Valves

Pressure Control Model 2000 Expanding Gate Valve

The Model 2000 Expanding Gate Valve is a uni-directional valve with a preferred sealing side. It is used on wellhead, production tree and manifold applications with working pressures of 2,000 through 5,000 psi.

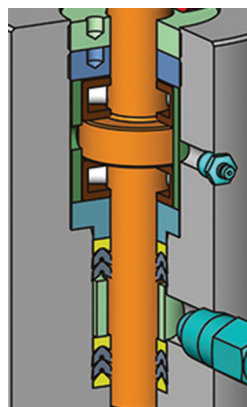
Features —

- Incorporates proven design elements
 - Floating seats with resilient seals allow the seats to be tightly wedged into the seat pockets in the open or closed position
 - Full-bore
 - Non-rising stem
- Seats, gate assembly, stem and other working parts easily replaced and packing reenergized in the field
- Metal-to-metal sealing
 - Body to bonnet seal
- Seat to gate resilient seal
- Gate guides
- End configuration options
 - Flanged ends
 - Threaded ends
- Complies with industry specifications
- Available as API 6A, PSL 1 through 4
- Available in API 6A material class AA, BB, CC, EE and FF
- PR2 Appendix F qualified

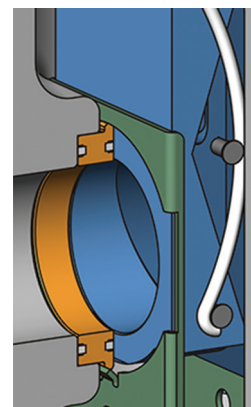


Availability —

Nominal Size	Working Pressure		
	2,000	3,000	5,000
2-1/16"	•	•	•
2-9/16"	•	•	•
3-1/8"	•	•	•
4-1/16"	•	•	•



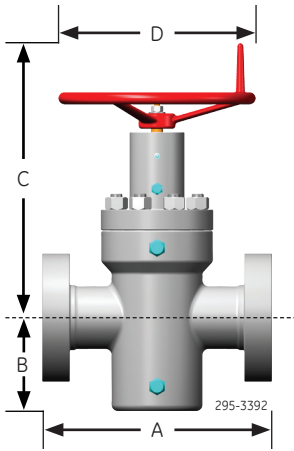
Model 2000
Stem Packing Detail



Model 2000
Gate/Seat Interface Detail



Model 2000 Expanding Gate Valve



Standard Operating and Dimensional Data —

Nominal Size	Working Pressure (psi)	Dimensions (in/mm)					Weight (lbs/kg)		Number of Turns
		A Threaded	A Flanged	B	C	D	Threaded	Flanged	
2-1/16"	2,000	9.25"/234.95	11.62"/295.15	5.06"/128.52	19.62"/498.35	10.00"/254.00	86.0/39.0	96.0/43.5	13
	3,000/5,000	9.62"/244.35	14.62"/371.35	5.25"/133.35	19.62"/498.35	13.00"/330.20	126.0/57.2	176.0/79.8	13
2-9/16"	2,000	10.25"/260.35	13.12"/333.25	5.81"/147.57	20.62"/523.75	13.00"/330.20	108.0/49.0	140.0/63.5	16
	3,000/5,000	10.25"/260.35	16.62"/422.15	6.12"/155.45	20.62"/523.75	13.00"/330.20	142.0/64.4	224.0/101.6	16
3-1/8"	2,000	11.38"/289.05	14.12"/358.65	7.06"/179.32	22.75"/577.85	13.00"/330.20	181.0/82.1	218.0/98.9	20
	3,000	11.38"/289.05	17.12"/434.85	7.31"/185.67	22.75"/577.85	16.00"/406.40	236.0/107.0	300.0/136.1	20
4-1/16"	2,000	13.00"/330.20	17.12"/434.85	9.12"/231.65	25.88"/657.35	16.00"/406.40	318.0/144.2	406.0/184.2	25
	3,000	13.00"/330.20	20.12"/511.05	9.12"/231.65	25.88"/657.35	16.00"/406.40	454.0/205.9	558.0/253.1	25
	5,000	13.00"/330.20	21.62"/549.15	9.44"/239.78	25.88"/657.35	16.00"/406.40	454.0/205.9	614.0/278.5	25



GE imagination at work

geoilandgas.com/pressurecontrol

GE © 2014. All rights reserved.
10/14, PC #2-0239 rev 3