

CFAS

Reduce your vulnerability
to interacting features

Gain new insights into pipeline integrity by finding and identifying cracks, dents and corrosion that are coincident and potentially interacting



Transform your understanding of Integrity

Fast and powerful new service from PII:

- Finds & prioritises coincident features from multiple ILI runs
- Runs can be any ILI technology from any vendor

Consolidated pipe listing & interactive Software viewer:

- One Excel-based pipe listing consolidating multiple separate ILI files
- View & interact with consolidated data at spool level via powerful graphical software



Find coincidence reduce vulnerability

Reduce your vulnerability to multiple features such as cracks, corrosion and dents interacting at the same location. The CFAS service provides a consolidated pipe listing drawing together features from multiple ILI runs identifying which are coincident and therefore may be interacting.

The service is run out of PII's Integrity Engineering Centre of Excellence which has decades of proven experience in aligning, matching and analysing ILI feature data. The ILI run data can be from any ILI technology and any vendor.

Powerful viewing software offers great flexibility for feature viewing and comparison, including color coding by feature type, identification/ comparison of specific feature types, ILI technologies or specific ILI runs.

Multiple PipelImage tools enable rapid navigation through the combined ILI dataset, including List View of all feature groups and easy export to Microsoft® Excel®. If mapping data is available, view CFGs in Google Earth.

An innovative service providing deeper and faster insight into pipeline integrity

Coincident Feature Assessment Service (CFAS)

Gain new insights into pipeline integrity by finding, identifying and prioritizing cracks, dents and corrosion that are coincident and are potentially interacting

Pipelines can be vulnerable to multiple features such as cracks, corrosion and dents interacting at the same location.

Finding and dealing with coincident features is difficult and time consuming for pipeline operators because it requires precise alignment, matching and overlay of large numbers of features with data spanning many different ILI technologies and many years.

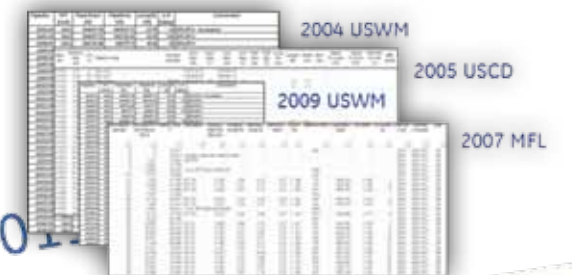
The new CFAS service meets the challenge of making the detection and reporting of coincident features simple and effective.

Key features & benefits

- Identify and prioritize coincident features across multiple inspections, multiple years and multiple vendors
- Query, filter and sort consolidated feature data across multiple inspections via one Excel-based pipe listing report
- Powerful viewing software delivered with every report- enables query, filtering and graphical display of feature data
- Account for differing quality of inspections and tool tolerances via customer-driven positional tolerances for the Excel report
- Use the viewing software to apply your own level of conservatism by adjusting axial and circumferential positional tolerances across all or on individual runs
- Use the viewing software to perform multiple modeling and what-if scenarios - switch runs off and adjust tolerances
- Fast and simple conversion, alignment, matching and consolidation of data files across any technology and any vendor
- Consolidated spool-level view of feature data & areas of coincidence across all ILI datasets

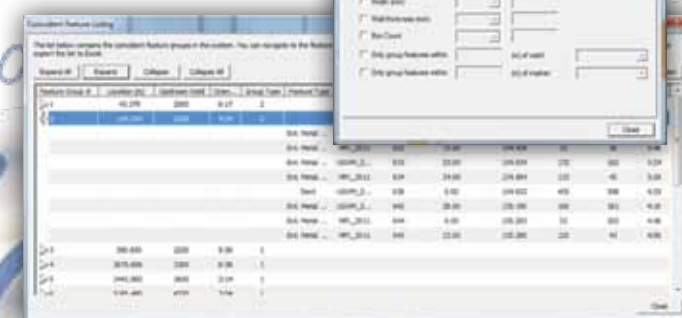
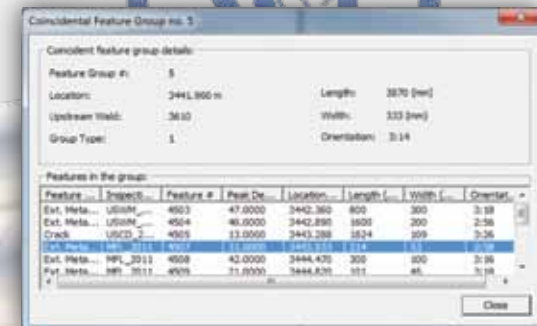
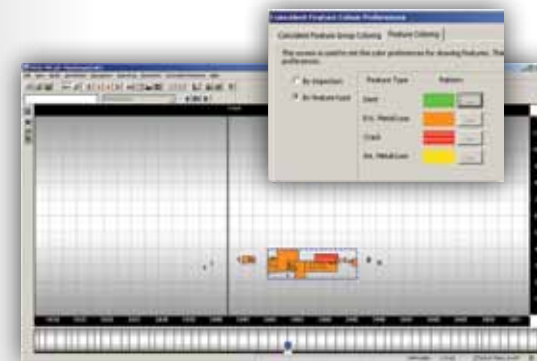
Excel-based reporting capabilities

- Consolidated pipeline listing incorporating reported features across multiple ILI data sets
- Listing of coincident feature groups and all individual features of which they are comprised
- Output reports from various queries and dynamic filters
- Dig planning reports, incorporating all coincident feature groups and other anomalies within a specified area (+/- "X" distance from the location of interest)
- Google Earth viewing of the selected coincident feature groups



PipelImage viewer capabilities

In addition to the Excel report, PipelImage viewer software is provided to enable user-friendly review of all features and inspection runs on one screen. This lets you interact with the features in many ways, for example: color coding feature types for quick and easy reference; focusing attention on specific elements by switching on/off certain feature types, ILI technologies or runs.



The CFAS service converts any vendor ILI data for weld to weld alignment to a centerline master. The consolidated dataset is loaded into the viewing software with all features overlaid in a single screen



PII Pipeline Solutions

a GE Oil & Gas and Al Shaheen joint venture

Western Europe and Africa

Atley Way, Cramlington
Northumberland NE23 1WW
United Kingdom
T +44 191 247 3200
F +44 191 247 3101

Southern Europe

Via Felice Matteucci 2
50127 Florence Italy
T +39 055 423 211
F +39 055 423 8308

Central Europe and CIS

Lorenzstrasse 10
D-76297 Stutensee-Blankenloch
Germany
T +49 7244 732 0
F +49 7244 732 123

Middle East

Al-Emadi, Financial Square
Building No 1, First Floor
Doha C-Ring Rd.
Qatar
T +974 401 31300
F +974 442 93460

Asia Pacific

No. 7, Jalan Pemberita U1/49
Section U1, Temasya Industrial Park
Glenmarie
40150 Shah Alam
Selangor D. E.
Malaysia
T +6 03 5569 5548
F +6 03 5569 4895

North America

7105 Business Park Drive
Houston, Texas
77041-4040 USA
T +1 713 849 6300
F +1 713 937 0740

4908 52nd Street SE
Calgary, Alberta
T2B 3R2 Canada
T +1 403 262 7447
F +1 403 237 9693

Av. Antonio Dovali Jaime 70, 4th floor
Col. Santa Fe, Del. Alvaro Obregon
CP 01210, Mexico City
T +52 55 9177 6601
F +52 55 9177 6606

For complete contact information,
please refer to our website.

geoilandgas.com/pii

The information contained herein is general in nature and is not intended for specific construction, installation or application purposes. GE reserves the right to make changes in specifications or add improvements at any time without notice or obligation.

GE, the GE Monogram, and imagination at work are registered trademarks of the General Electric Company.

Microsoft and Excel are registered trademarks of Microsoft Corporation.

©2012 General Electric Company
All Rights Reserved

