




# Texsteam\* Pumps:

precise chemical injection pumping



imagination at work



With a wide range of capacities and operating pressures, GE's versatile Texsteam pumps can handle challenging chemical pumping requirements in oil and gas production, gas pipeline, industrial, water treatment and chemical processing applications.

By far, the largest number of Texsteam pump projects involves chemical injection into wells and pipelines, with wells comprising the bulk of those applications. Texsteam pumps can inject more than a dozen different chemicals to improve well production, maintain well or pipeline flow, and render harmless the corrosive or toxic substances contained in natural gas. The Texsteam line of pumps features a large selection of positive displacement chemical injection pumps to serve the distinctive needs of the oil and gas industry.

## Applications

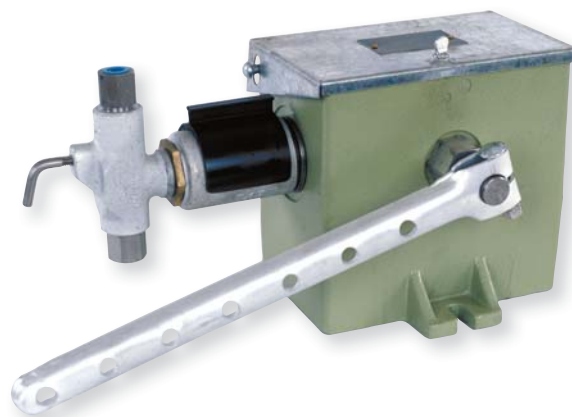
- Injection of methanol, H<sub>2</sub>S scavenger, de-emulsifiers, solvents, corrosion inhibitors, lubricants and other chemicals
- Transfer of liquid from one container to another

## Series 1200 Beam Driven Injection Pump

Designed specifically for operation on a beam pumped oil well, the Series 1200 pump is powered by direct connection to the movement of a walking beam, rod line or rocker arm.

- Single or dual-headed units available
- Simple design, easy maintenance

Plunger Size	Maximum Discharge Pressure		Maximum Volume Output Pints (Liters) per Day	
	psi	(bar)	Simple Unit	Duplex Unit
3/16"	3000	(206)	4.5 (2)	9 (4)
1/4"	1,500	(103)	7 (3.3)	14.5 (6.8)
3/8"	1,000	(70)	18 (8.5)	36 (17)
1/2"	500	(34)	32 (15)	64 (30)



# Series 2200 Electric Driven Injection Pump



The Series 2200 electric driven injection pump offers moderate flow and pressure rates.

- 1/4 horsepower motor available in TENV or EXP, single or 3 phase
- 316 stainless steel fluid end
- Simplex or duplex available
- Maximum discharge pressure 1,000 psi
- Maximum volume 120 gallons per day (duplex model)
- Built-in gear reducer available in 15, 30, or 60 strokes/minute
- Crosshead bearing supported on both ends
- Flow adjustable while running

Model Number	Plunger Size	Strokes per Minute	Maximum Output 1000 psi (70 kg/cm <sup>2</sup> ) per Head	
			Gallons (Liters) per Day	
2204	3/16"	15	2.19 (8.2)	
		30	4.37 (16.5)	
		60	8.74 (33.0)	
2201	1/4"	15	3.84 (14.5)	
		30	7.68 (29.0)	
		60	15.36 (58.1)	
2203	3/8"	15	8.64 (32.7)	
		30	17.28 (65.4)	
		60	34.56 (130.8)	
2205	1/2"	15	15.36 (58.1)	
		30	30.72 (116.2)	
		60	61.44 (232.5)	

# Series 2400 Electric Driven Injection Pump



The Series 2400 electric driven injection pump utilizes C-faced motors and common gear reducer available in two speeds of 30 or 60 strokes per minute.

- Maximum discharge pressure: 4,000 psi (276 bar) with 1/2" plunger
- Maximum volume: 1760 GPD (6,662 Liters) with 1-1/4" plunger
- Simplex, duplex or quad configuration
- 1 or 3 phase - TEFC or explosion proof motors available
- Plunger sizes: 1/2", 3/4", 1", 1-1/4"
- Flow adjustable while running with adjustable crosshead

Plunger Size	Strokes per Minute	Maximum Discharge Pressure		Volume Gallons (Liters) per Day per Head			
		psi	(bar)	Maximum		Minimum	
1/2"	30	4000	(275)	70	(265)	7	(26)
	60	4000	(275)	138	(522)	14	(52)
3/4"	30	3200	(220)	160	(605)	16.5	(62)
	60	3200	(220)	330	(1249)	33	(125)
1"	30	1000	(70)	260	(984)	25	(94)
	60	1000	(70)	510	(1930)	56	(212)
1-1/4"	30	500	(34)	440	(1665)	44	(166)
	60	500	(34)	880	(3331)	88	(333)

# Series 2500 Electric Driven Injection Pump



Plunger Size	Strokes per Minute	Maximum Discharge Pressure		Volume Gallons (Liters) per Day per Head			
		psi	(bar)	Maximum		Minimum	
3/16"	15	6000	(414)	2.4	(9)	.2	(.7)
	30	6000	(414)	4.9	(185)	0.5	(1.8)
	60	6000	(414)	9.8	(37)	1	(3.7)
	120	4000	(275)	18.7	(70.7)	1.9	(7.1)
1/4"	15	3200	(221)	4.3	(16.2)	0.4	(1.5)
	30	4000	(275)	8.6	(32.5)	0.9	(3.4)
	60	4000	(275)	17.3	(64.5)	1.7	(6.4)
	120	2100	(145)	34.6	(131)	3.5	(13.2)
3/8"	15	1450	(100)	9.8	(37)	1	(3.7)
	30	1800	(124)	19.6	(74.1)	2	(7.5)
	60	1700	(117)	39.2	(147.6)	3.9	(14.7)
	120	950	(65)	78.5	(297.1)	7.8	(29.5)
1/2"	15	820	(56)	17.4	(65.8)	1.7	(6.4)
	30	1025	(71)	34.8	(131.7)	3.5	(13.2)
	60	1000	(70)	69.7	(263.8)	7	(26.4)
	120	525	(36)	139.5	(528)	13.9	(52.6)

Texsteam Series 2500 chemical injection pumps are electric driven, positive displacement pumps utilizing C-faced motors and common gear reducers. The gear reducers are available in 15, 30, 60, and 120 strokes per minute configurations. By utilizing even further flexibility of a wide variety of plunger sizes, the Series 2500 can fill many application requirements of different flows and pressures.

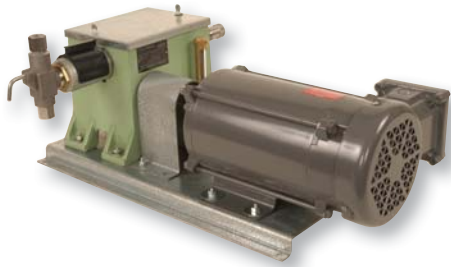
The Series 2500 can have up to four, flow adjustable heads while running fluid ends.

OPTIONS: Ceramic plungers, which provide longer packing life, and a wide variety of packing are designed to meet the demands of many different chemical applications.

- Maximum discharge pressure: 6,000 psi (414 bar) with 3/16" plunger
- Maximum volume 139 gallons per day per head (528 liters per day) with 1/2" plunger
- Each head is adjustable while running
- Available simplex, duplex, triplex, or quadruplex configurations
- Mix or match head sizes – pump the same or different chemicals
- Available in four stroke rates: 15, 30, 60, or 120 strokes per minute
- Each head is independently coupled and easy to maintain in the field
- 1 or 3 phase, TEFC or explosion proof, 50 or 60 Hz motors available
- Available with 3/16", 1/4", 3/8", or 1/2" plunger



# Series 4300 Electric Driven Injection Pump



Plunger Size	Maximum Discharge Pressure		Maximum Volume Output @ Gear Ratio Gallons (Liters) per Day		
	psi	(bar)	100:1	50:1	25:1
3/16"	5,000	(344)	2.5 (9.5)	5 (19)	10 (37.8)
1/4"	2,400	(165)	5 (19)	10 (38.5)	20 (74.5)
3/8"	1,200	(82)	12 (45.5)	23 (86.5)	46 (174)
1/2"	600	(41)	21 (79.5)	40 (151)	80 (302.5)
3/4"	300	(20)	46 (174)	91 (345)	182 (689)
1"	150	(10)	81 (307)	163 (617)	325 (1,229)

The Series 300 pump utilizes an integral worm gear drive available in three different standard ratios and six plunger sizes to provide a wide selection of flows and pressures.

- Positive Displacement
- Up to 8 pumping heads driven by a single motor
- Each pumping head capacity is field adjustable 0 to 100% while running
- Oil bath lubrication for long gear box life

# Series 3700 Gas/Pneumatic Driven Injection Pump

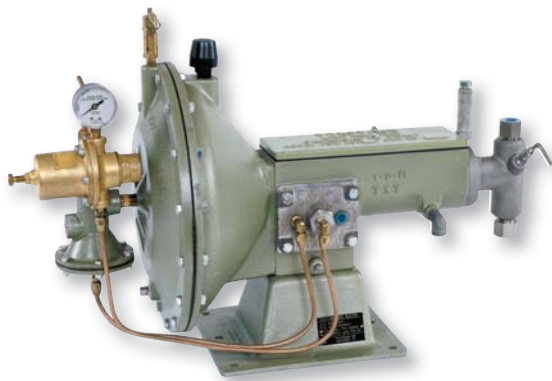


Plunger Size	Maximum Discharge Pressure		Maximum Volume Output Pints (Liters) per Day	
	psi	(bar)	Simplex Unit	Duplex Unit
3/16"	3000	(206)	8 (3.7)	16 (1.8)
1/4"	1,500	(103)	14 (6.6)	28 (13.2)
3/8"	1,000	(70)	36 (17)	72 (34)
1/2"	500	(34)	60 (28.3)	120 (56.7)

The Series 3700 pump is designed to handle aqueous solutions and other chemicals. It is available in a wide variety of models with three volume adjustments and single or double headed units.

- Field adjustable speed/volume control
- Operates with air/gas pressures as low as 5 psi
- Furnished with or without reservoirs
- Furnished with or without regulator and gauge

# Series 5000 Gas/Pneumatic Driven Injection Pump



Plunger Size	Maximum Discharge Pressure		Maximum Volume Output Gallons (Liter) per Day
	psi	(bar)	
1/4"	10,000	(690)	16 (60.5)
3/8"	10,000	(690)	43 (162.5)
1/2"	10,000	(690)	85 (322)
3/4"	5,000	(344)	160 (605.5)
1"	3,000	(206)	320 (1,211)
1-1/4"	2,000	(138)	500 (1,892)

The Series 5000 pump is designed for high flow and high pressure applications.

- Pressure as high as 10,000 psi
- Designed for continuous operation
- Excellent for pumping chemicals, methanol, and corrosion inhibitors
- Field adjustable speed/volume control
- Simple modification can lower pumping rate to one stroke every five minutes
- Operates with air/gas pressures as low as 15 psi
- Trim for corrosive applications available
- Microswitch design available
- Regulator, gauges and tanks available as accessories

# Series 5100 Gas/Pneumatic Driven Injection Pump



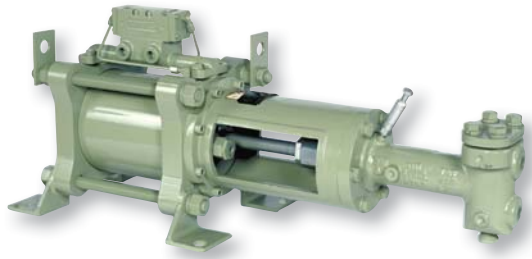
Plunger Size	Maximum Discharge Pressure		Maximum Volume Output Gallons (Liters) per Day
	psi	( bar)	
3/16"	1,500	(103)	4.2 (16)
1/4"	1,500	(103)	7.5 (28.5)
3/8"	1,500	(103)	17 (64.3)
1/2"	1,500	(103)	32 (121)

NOTE: High pressure heads available to 6,000 psi

The Series 5100 pump is powered by gas/air via a diaphragm with a spring return. The pump offers two strokes for adjustable 1" or 1/3" lengths and flow rates.

- Direct acting
- Powered by diaphragm motor with spring return
- Field adjustable speed/volume control
- Operates with air/gas pressures as low as 8 psi
- Trim for corrosive applications available
- Micro switch design available
- Regulators, gauges and tanks available as accessories

# Series 6100 Gas/Pneumatic Driven Injection Pump Direct or Double Acting



Plunger Size	Maximum Discharge Pressure		Maximum Volume Output Gallons (Liters) per Minute
	psi	(bar)	
1-1/4"	9,000	(620)	1.5 (6)
2-3/4"	1,800	(124)	10 (37)
4"	900	(62)	20 (75)

The Series 6100 pump offers the highest flow rate, 20 gallons per minute, all the Texsteam chemical injection pumps. This pump is well-suited for offshore applications with its optional three part corrosive resistant paint system.

- Positive displacement pump
- Simplex or duplex offering
- Field adjustable speed/volume control
- Exhaust gas can be recovered to minimize gas consumption
- Heads made from cast steel or 316 stainless steel
- Minimum NDSHR - 8 feet of water
- Trim for corrosive applications available
- Regulators, gauges and manifold available as accessories

# Series 9000 Gas/Pneumatic Driven Double Diaphragm Utility Injection Pump



The Series 9000 pump is a heavy duty transfer pump capable of handling any liquid from alcohol to mud liquids containing solids 1/4" in diameter with ease and liquids containing abrasives with a minimum of wear.

- Can operate completely submerged
- Designed to pump liquids of various densities
- Air or gas operated at supply pressures from 5 to 100 psi
- Needs no priming for suction lifts up to 14-feet of water without foot valve and to 29-feet of water with foot valve
- Features strong handle, sturdy base, a power control valve for close discharge volume control and a power air safety valve
- Furnished with or without reservoirs



# Series MXG Gas/Pneumatic Driven Injection Pump



The Series MXG pump offers lightweight design with powerful performance. Weighing less than 10 lbs., it is capable of handling discharge pressures as high as 10,000 psi while consuming half the gas used by standard pneumatic pumps.

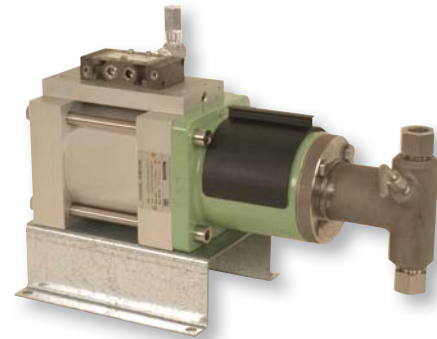
- Adjustable flow rate
- Positive cycle operation
- Easily field serviceable
- 316 SS fluid end
- 1 to 60 strokes/minute
- Simplex or duplex offering
- Can be mounted vertically or horizontally
- Up to 62 gallons (235 liters) per day
- Discharge pressures to 10,000 psi (690 bar)
- Differential pressure: 250 psi (10 bar) maximum  
30 psi (2.1 bar) minimum

Model Number	Plunger Size	Maximum Discharge Pressure		Volume Gallons (Liters) per Day	
		psi	(bar)	Maximum	Minimum
MX3-4	3/16"	10,000	(690)	8 (30.3)	0.11 (0.42)
MX3-1	1/4"	10,000	(690)	14.5 (54.9)	0.2 (0.75)
MX3-3	3/8"	6,000	(414)	32.1 (121.5)	0.6 (2.27)
MX3-5	1/2"	3,500	(241)	62 (234.7)	1.1 (4.16)

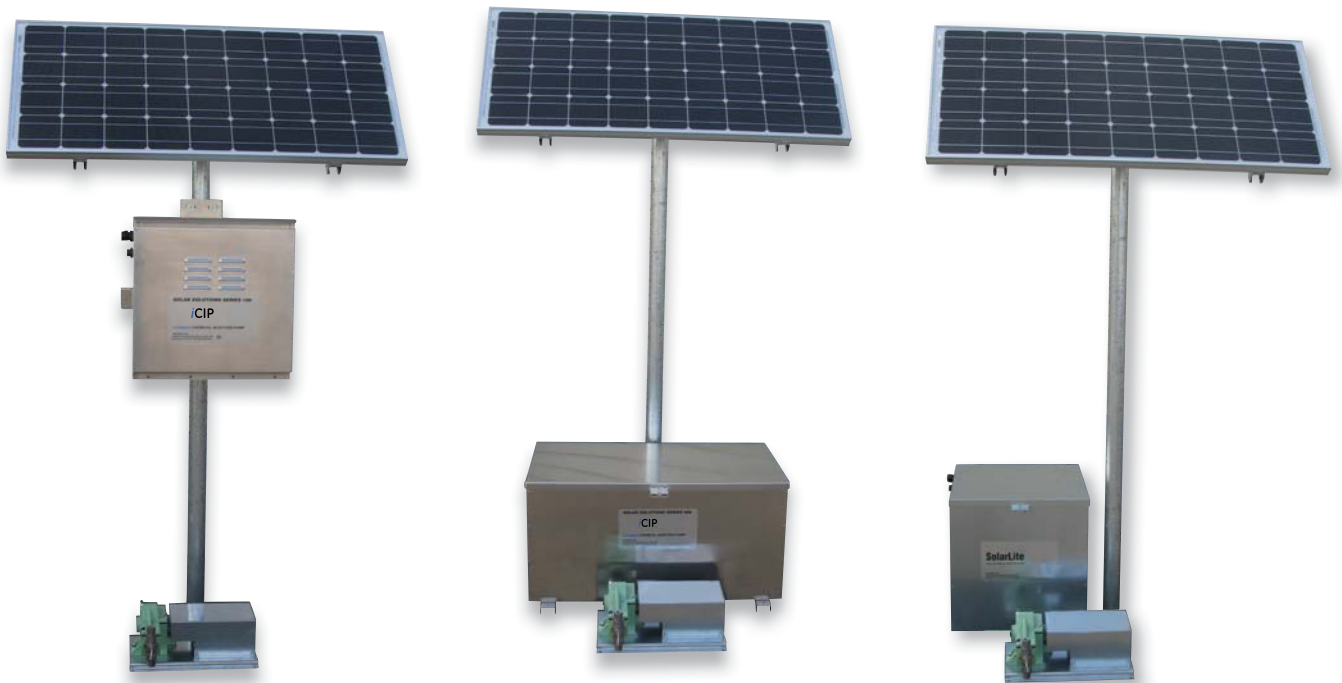
# Series MX-5 Gas/Pneumatic Driven Injection Pump

The Series MX5 is a heavy duty, lightweight pump capable of pumping up to 830 gallons per day. It uses half the gas or air of a standard pneumatic pump to reach discharge pressures as high as 10,000 psi.

- Adjustable packing
- Easily field serviceable
- 1 to 60 strokes per minute
- Simplex or duplex offering
- Differential pressure: 145 psi (10 bar) maximum  
30 psi (2.1 bar) minimum



Model Number	Plunger Size	Maximum Discharge Pressure		Volume Gallons (Liters) per Day per Head	
		psi	(bar)	Maximum	Minimum
MX5-5	1/2"	10,000	(690)	137 (518)	8 (30)
MX5-6	3/4"	5,500	(380)	310 (1173)	50 (189)
MX5-7	1"	3,100	(214)	550 (2082)	100 (378)
MX5-8	1-1/4"	2,000	(138)	830 (3141)	300 (1175)



## Solar Solutions\* iCIP\* and HiCIP\* Intelligent Chemical Injection Pumps

The iCIP and HiCIP pumps are solar-powered chemical injection pumps based on the proven Texsteam 2200 series pump design, and using its packing and plunger technology.

- Zero emissions chemical injection pump
- Ideal for remote locations – does not require on-site power source
- Wide variety of volume and pressure capabilities
- Microprocessor based programmable controller
- Continuous injection provides even dispersion of chemical
- System protections – utilize fault management system
  - Low battery shutdown, motor overload protection and others
  - Fuse protection
- Certified and approved to CSA (Canada) and UL (USA) standards:
  - Class I Division II – Groups C & D
  - Class I Division I – Groups C & D (motor)
- NEMA 3R battery enclosure that houses control panel and batteries
- Quiet operations
- 24 month system warranty



## Texsteam SolarLite\* Chemical Injection Pump

The Texsteam SolarLite pump is an economical solar-powered chemical injection pump that offers high pressure shutdown to prevent motor overload and provides low battery protection.

- Dial controlled, variable speed capability to adjust flow rate by turning one simple knob
- High efficiency brushed DC gear motor or brushless DC gear motor
- High torque performance response as pressure fluctuates, pump speed remains constant
- Continuous injection provides even dispersion of chemical
- 3 controller indicator lights: Power, Motor Run/Stop, Fault
- Fusible protection at the battery connections
- Certified and approved to CSA (Canada) and UL (USA) standards: Class I Division II Groups C & D
- Same pump unit as iCIP pump - 2200 series pump design utilizing Texsteam packing and plunger technology with years of proven reliability
- 316 SS heads standard, available in four head sizes: 3/16", 1/4", 3/8", and 1/2"
- Wide variety of available packing and o-ring materials for chemical compatibility
  - New SDP packing technology to solve all your compatibility problems
- Duplex pump-end configurations available (consult factory)
  - Both heads available with stroke adjustment option
- Lockable battery enclosure
- Available options and accessories
  - Temperature thermostat for methanol applications
  - On/Off switch
  - Lockout key switch
  - Alternative power supply - 110 AC to 12 VDC or 24 VDC to 12 VDC
- Complete package with all required components
- Standard Texsteam Pump warranty

**GE Oil & Gas**

16240 Port Northwest Drive  
Houston, Texas 77041-2645  
Ph: 832.590.2306 Fax: 713.849.2879  
Toll Free Phone: 800.945.9898  
Email: [texsteampumps.inquiries@ge.com](mailto:texsteampumps.inquiries@ge.com)

Visit us online at:  
[www.ge.com/energy](http://www.ge.com/energy)

2012 General Electric Company  
All Rights Reserved  
\*Denotes trademark of General  
Electric Company

