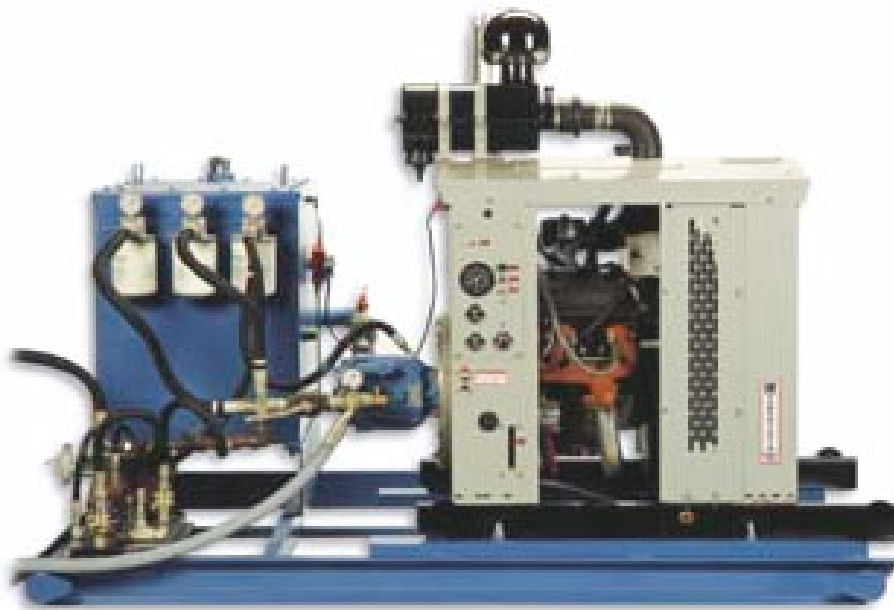




S-2000 Hydraulic Power Units

Hydraulic and Gas engine skids



Features

Designed for hydraulic power supply requirements

- Natural gas, diesel or electric motor prime mover
- All major engine brands
- High flow, high performance piston pump
- 100% secondary fluid containment
- 1" pressure and return lines
- 90 gallon reservoir
- Low hydraulic oil level shutdown
- High hydraulic oil temperature shutdown
- 2 return and 1 case drain 10 micron filtration
- Speed control hand wheel on pump
- Liquid filled pressure gauges
- Optional chemical pump
- Optional hydraulic oil cooler
- Engine Options:
 - » Luber-Finer 750CT filter | Heat trace booster pump
 - » Fusible link gas valve fire shutdown | Radiator reservoir 1.75 lite
 - » Pressure bypass switch, valve handle actuated

Specifications

Prime mover	Natural Gas Engine, Diesel Engine, Electric Motor
Hydraulic pumps	Vickers PVH 57 / PVH74 / PVH98 / PVH131) Kawasaki K3VL45 / K3VL80 / K3VL112 / K3VL140
Pump	Industrial High Performance Piston Pump 74cc - 140cc (4.5cu.in - 8.5cu.in.)
Pump pressure	Vickers PVH Series 3,625 psi max. continuous, Kawasaki K3VL Series 4,600 psi max. continuous
Hose sizes	1" Pressure & Return w/ 3/2" Case Drain
Hose ratings*	High Pressure SAE 100R12 Four Wire (4,000 psi) Low Pressure SAE 100R1AT Single Wire (1,500 psi min.)
(G) Gas engine power unit	GM 262-V6 / GM 350-V8 / GM 454-V8 / Ford 300-V6 / Ford 460-V8
(E) Electric motor	NEMA Type C Face Foot Mounted
Steel skid frame	96" x 61" (2,438 mm x 1,549 mm) w/ Lifting Lugs & 100% fluid containment pan
Oil reservoir capacity	90 US Gallon (340 liters)
Low level switch	Murphy EL 150K1
Approximate weight	3,500 lbs (1,588 kg)

*Please consult your GrenCo representative before exceeding published values.

Support

Our experts can assist with all of your operating and maintenance requirements. Visit www.geoilandgas.com/lufkin to locate a service technician near you.



Heat trace booster pump (optional)



Large radiator reservoir (optional)



Luberfiner oil filter (optional)



GRENCo
ENERGY SERVICES

Part of GE Oil & Gas

geoilandgas.com/lufkin