

# Meet regulations and minimize costs with SCCScreen CD

The Advisory issued by the US DOT in mid 2003 requires all pipeline operators to determine whether their pipelines are susceptible to Stress Corrosion Cracking (SCC) and assess the impact of SCC on pipeline integrity.

GE Energy's SCCScreen™ CD process provides a reliable, low-cost strategy for meeting this challenge. Using a combination of proven in-line inspection technologies and industry-leading crack assessment services, our SCCScreen is more reliable and less expensive than both SCC Direct Assessment (SCC DA) and hydrostatic testing.

## Incremental approach to SCC management

SCCScreen CD is part of GE Energy's fully integrated 3-Phase SCC Management Program. Each phase is designed to minimize cost, time and service disruptions while providing pipeline operators with a fully compliant process for the detection of SCC.

### Phase 1:

Initial screening procedures use advanced segmentation and modeling techniques to determine whether a pipeline is susceptible to SCC. Negative results exempt an operator from any additional actions, and costs are kept to a minimum. Positive results indicate that additional threat validation procedures should be undertaken.

### Phase 2:

Threat validation provides operators with the necessary confidence that their pipeline is free from SCC. Using advanced in-line inspection technologies, provided by UltraScan® CD for liquid lines, the necessary data is gathered to perform SCCScreen CD analyses quickly and economically.

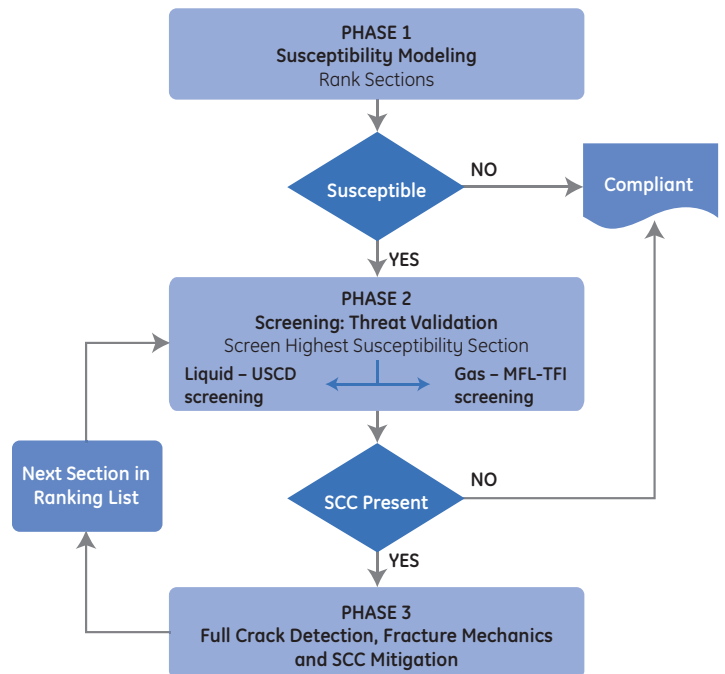
### Phase 3:

Should the threat validation process indicate the presence of SCC, full Crack Detection and Fracture analyses can be undertaken, using high-resolution data gathered during the Phase 2 inspection, to develop a comprehensive SCC Management Plan.

All three phases are fully integrated, so the cost of moving forward is incremental and cycle time is kept to a minimum. From beginning to end, pipeline operators need spend only what is necessary to achieve regulatory compliance.

## Ideal situations for SCCScreen CD

- For pipelines that have no evidence of SCC but that are susceptible, SCCScreen CD is a fast, cost-effective and reliable way to confirm your assumptions and comply with regulations.
- For operators who are less certain of their pipeline's condition, it is an efficient and affordable way to determine SCC presence before undertaking a full crack-detection inspection and management plan.



## Meet regulations and minimize costs with SCCScreen CD

GE Energy uses industry-leading techniques at every stage of the process – helping our customers meet regulations, minimize costs and ensure the continued productivity and longevity of their pipeline assets.

### Key Features

- Applicable to liquid pipelines
- Reduces cycle time without affecting discovery
- Less expensive than hydrostatic testing and SCC DA
- High-resolution data collection allows for detailed analysis and forecasting, if required
- Accommodates ERW threat assessment with same tool run
- Assures future life of pipeline and confirms appropriate re-inspection intervals with specified confidence level
- Validated high confidence levels for defect detection
- Accommodates ERW threat assessment with same tool run

### SCCScreen CD versus Hydrostatic Testing

- Significantly less expensive
- No interruption to supply; pipelines remain in service
- Provides operators with the ability to assess remaining defects
- Data gathered during the screening process can be used to predict SCC growth rates and develop SCC management plans

### SCCScreen CD versus SCC Direct Assessment

- Less expensive for longer pipelines
- Significantly more reliable
- Enables more advanced growth forecasting calculations

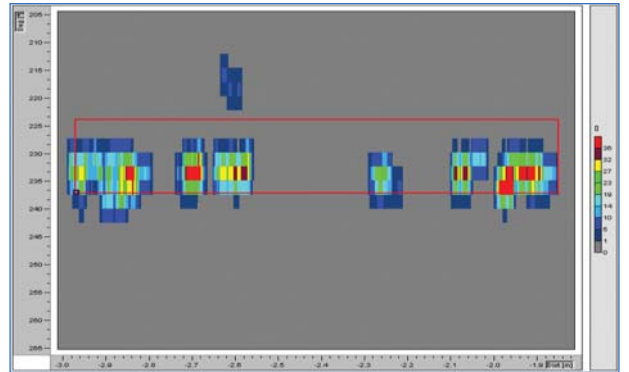
With its SCCScreen CD process, GE Energy provides pipeline operators with a practical, economical and timely means of identifying SCC – and delivers the confidence levels necessary to comply with the DOT SCC Advisory.

### Contact

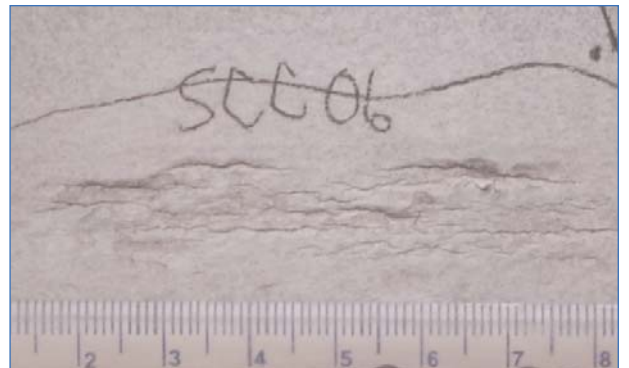
For more information on SCCScreen CD, contact your GE Energy representative or visit [www.gepower.com/pii](http://www.gepower.com/pii)



In-line inspection is only necessary if Phase 1's advanced segmentation and modeling procedures indicate that the pipeline is susceptible to SCC. Otherwise, no further action is required.



All data collected during the screening process is of sufficiently high resolution to allow complete crack-detection analysis and evaluation, should it prove necessary.



If threat validation indicates the presence of SCC, Phase 2 inspection work flows seamlessly into the development of a comprehensive, prioritized SCC Management Plan that will minimize excavation and remediation costs.